

**Publication Date:** 6/9/2014  
**Outlet:** HomeWorld Business.com  
**Media Type:** Magazine  
**Circulation:** 22,000

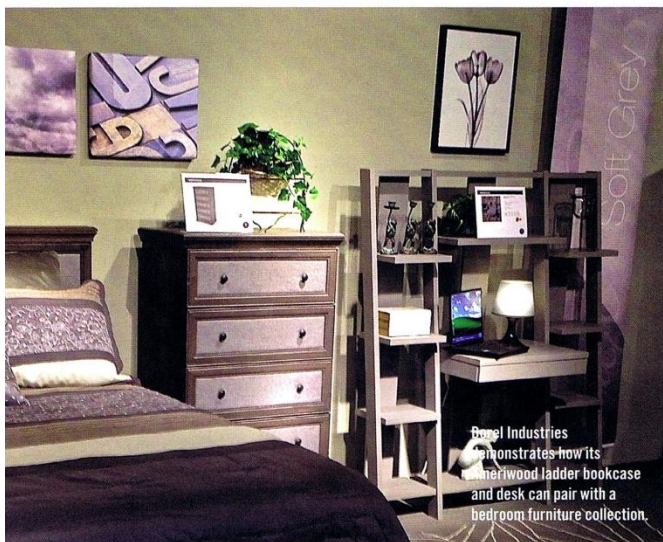
# 'Workstyle'

## RTA Home Office Takes Care Of Business With Lifestyle Design Approach

Call it "workstyle." Ready-to-assemble home office furniture is establishing a distinct presence in the marketplace by adopting a lifestyle orientation. Fitting in, whether in terms of style, function or both, gives RTA an edge as consumers and even businesses look beyond the traditional office to establish environments that suit consumers' work oriented preferences. Whether for professional endeavors or personal tasks, office RTA has looked to leverage consumer desire to take care of business in a manner that is most comfortable to them. **HWB**



Z-Line Designs has introduced chairs and desks in modern styles that use lighter finishes to brighten the home office.

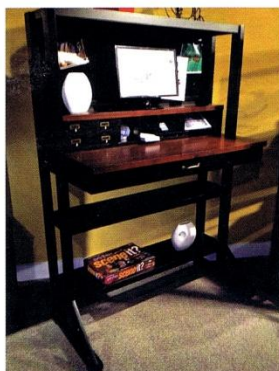


Royal Industries demonstrates how its mahogany ladder bookcase and desk can pair with a bedroom furniture collection.



Powell's Maximus loft bed is flexibly configured to accommodate a workstation.

Twin-Star has been adding office desks in contemporary styles and white finishes for a modern look and smaller living spaces.



E-Ready's standing desk is designed to be flexible, as it can be configured as a youth, standard or standing desk.

Adeptus' Duo system features furniture that can serve as building blocks of home office, crafting and DIY work stations.



Sauder Woodworking integrates home office furniture into a coordinated rustic/industrial styled collection.